

EDGAR LEONARD PATCH
STONEHAM, MASS.

Affiliated with the American Pharmaceutical Association in 1872
President of the A. Ph. A., 1893-1894
Chairman Scientific Section 1890-1891



Edgar L. Patch

JOURNAL OF THE AMERICAN PHARMACEUTICAL ASSOCIATION

VOL. XI

APRIL, 1922

No. 4

EDGAR LEONARD PATCH.

There are events in the life of our 50-year member that have a relation to periods in that of the American Pharmaceutical Association. The meeting of pharmacists in New York at which preparations were made for organizing the Association was held in the fall of 1851; Edgar L. Patch was born in Spencer, Mass., December 2, 1851. Fifty years ago, when the subject of this brief sketch had just graduated from the Massachusetts College of Pharmacy, he affiliated with the A. Ph. A., in the year of the prior Cleveland meeting.

The 1893 meeting of the Association was more or less international in character; the World's Congress of Pharmacists and Seventh International Pharmaceutical Congress was held in Chicago under the auspices of the American Pharmaceutical Association; it was at the close of this convention that Professor Patch was elected president of the Association, and he presided at the Asheville, N. C., meeting. He has passed his seventieth birthday; the Association is nearing it; Mr. and Mrs. Patch will, D. V., celebrate their fiftieth wedding anniversary next year.

At the age of 18 years, E. L. Patch formed, with the late Henry Canning of Boston, the firm of Canning & Patch, one of the best known prescription pharmacies in New England; in 1895, on account of increasing responsibilities in his manufacturing business, which had been organized in 1888, he withdrew from the firm.

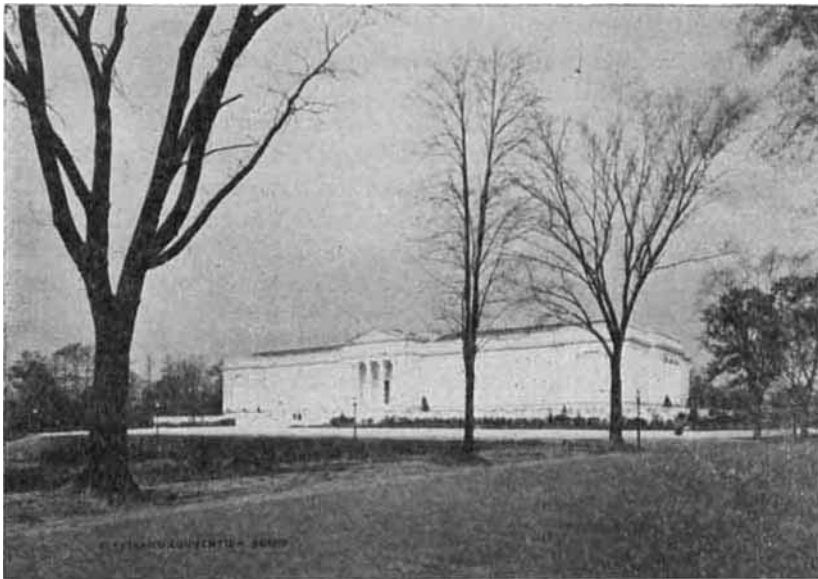
Soon after graduation Mr. Patch was made treasurer and registrar of his alma mater, and in 1879 he became a member of the faculty as professor of the Theory and Practice of Pharmacy and, in 1888, also director of the pharmaceutical laboratory. He continued in this work until 1892, when his personal interests necessitated his retirement from engagements that required the time demanded by the growing business of which he is president and treasurer. He held a number of important offices in the state pharmaceutical association, and was for several years president of the Boston Druggists' Association. His activities in the American Pharmaceutical Association are indicated by the 1902 A. Ph. A. Index—the titles of his contributed papers and reports require about a column; they relate to pharmaceutical chemistry, practical pharmacy and dispensing, laboratory

technique, legislation, etc. For a number of years he was chairman of the Committee on Quality of Medicinal Products. The last paper he contributed to the Section on Historical Pharmacy is printed on p. 202 of Volume X, and is entitled "Some Boston Druggists of Fifty Years Ago."

Professor and Mrs. Patch have a family of five sons and one daughter, and grandchildren. All the sons, excepting Dr. Arthur I. Patch, who is a practicing physician and a graduate of Brown, and Harvard Medical College, are graduates of Massachusetts Institute of Technology. Prof. James A. Patch was, until a few years ago, head of the department of chemistry and physics in the Syrian Protestant College of Beirut, Syria. During the war Claude E. served the United States as efficiency man on the Emergency Fleet work. Ralph R. is vice-president and general manager of the E. L. Patch Co.; Ernest I. is a graduate of Annapolis Naval Academy. The daughter, Esther M., a graduate of Mount Holyoke, is teaching science in high school.

Professor Patch has always been active in matters which speak for the good citizen in country, state and municipality. For many years he was secretary of the Town Finance Board, he is a hard worker for the church, and ever concerned in community affairs; the surroundings of Stoneham speak largely of his love of nature's beauty, his civic pride, his interest in the welfare of others and the enjoyment he derives from their happiness.

F. G. E.



CLEVELAND MUSEUM OF ART.

The Cleveland Museum of Art overlooks the lake in Wade Park. It is one of the most complete art museums in the country, its collection of armor being second only to one in the United States. The museum is adjacent to the Cleveland School of Art, Western Reserve University, and Case School of Applied Science. It aims to aid in furthering the study of art in elementary and advanced schools.

The American Pharmaceutical Association will meet in Cleveland during the week of August 14, 1922.